

MECHANICAL SITE PLAN
SCALE: 1" = 40' 0"



MECHANICAL LEGEND	
	SANITARY WASTE
	PLUMBING VENT
	DOMESTIC COLD WATER
	DOMESTIC HOT WATER
	HOT WATER REGULATING LINE
	CONDENSATE DRAIN
	GAS
	REFRIGERANT LIQUID
	REFRIGERANT SUCTION
	GATE VALVE
	CHECK VALVE - ARROW INDICATES FLOW
	BALANCING VALVE
	NEW CONN. TO EXIST.
	GAS COOK
	PRESSURE REDUCING VALVE
	MECHANICAL SHOCK ARRESTOR; LETTER INDICATES PDI SIZE
	CLEANOUT
	VENT THRU ROOF
	THERMOSTAT
	SPLITTER DAMPER
	VOLUME DAMPER
	AIR EXTRACTOR
	TURNING VANES
	UNION
	HOSE BIBB
	RELIEF VALVE
	MOTORIZED DAMPER

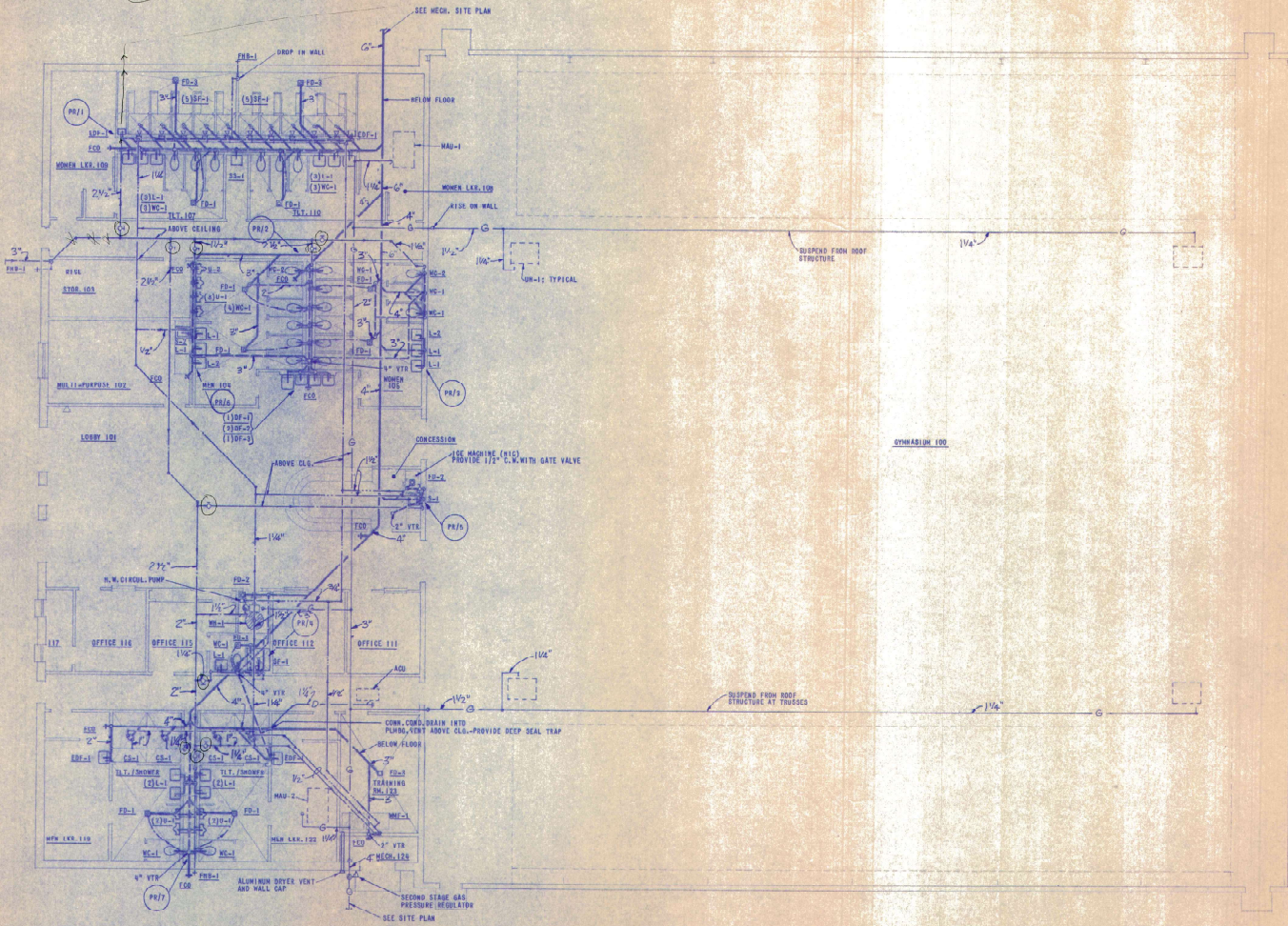
FOR MULTIPURPOSE BUILDING FOR
S.C.O.C.B.A. MISSISSIPPI
C.M.A.A.C.
R.L. ARCHER, P.E. ARCHITECT
D. WILLIAMSON ARCHITECT
P.O. DRAWING ROOM
717 HWY. 45 NORTH
JACKSON, MISSISSIPPI 39201
PH: 662-993-8873

ARCHER & ARCHER, P.A.
ARCHITECTS - ENGINEERS

APPROVED BY	D.S.B.
DRAWN BY	D.A.B.
DATE	8 / 20 / 85
SHEET	16
OF	22

BOWRON & BUTLER
 CONSULTING ENGINEERS
 JACKSON, MISSISSIPPI
 PHONE: 669-1316

10 cut-off in 220



FLOOR PLAN - PLUMBING
SCALE: 1/8" = 1' 0"



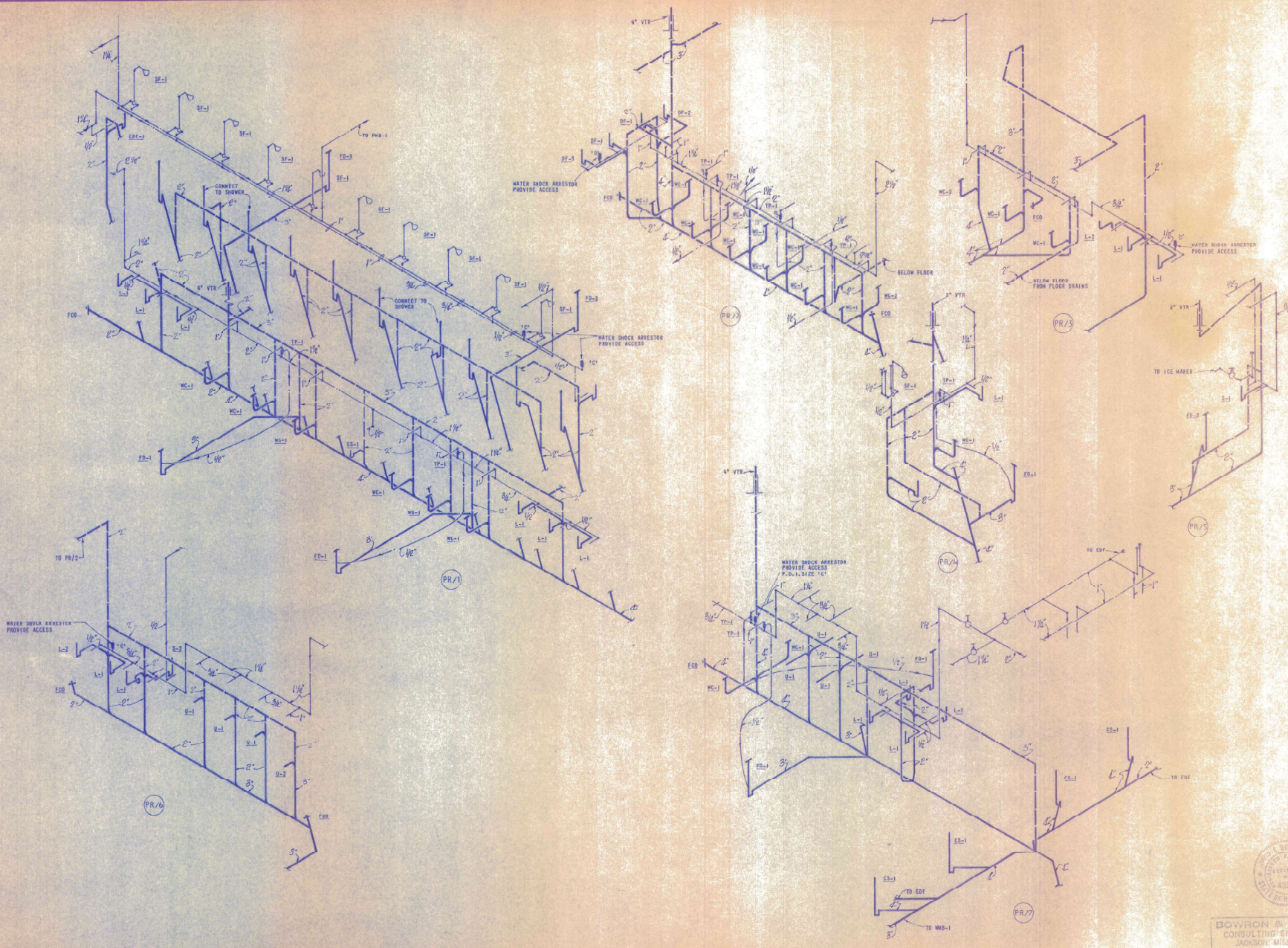
A MULTIPURPOSE BUILDING FOR
E. N. J. C.
SCOGDA, MISSISSIPPI
BOWRON & BUTLER
CONSULTING ENGINEERS
JACKSON, MISSISSIPPI
404-482-4873

ARCHER & ARCHER, P.A.
ARCHITECTS - ENGINEERS



BOWRON & BUTLER
CONSULTING ENGINEERS
JACKSON, MISSISSIPPI
PHONE 564-3116

APPROVED BY	DEB
DRAWN BY	KK
DATE	8/20/85
SHEET	17
OF	22



A MULTIPURPOSE BUILDING FOR
 E. M. J. C.
 SCOOBA, MISSISSIPPI

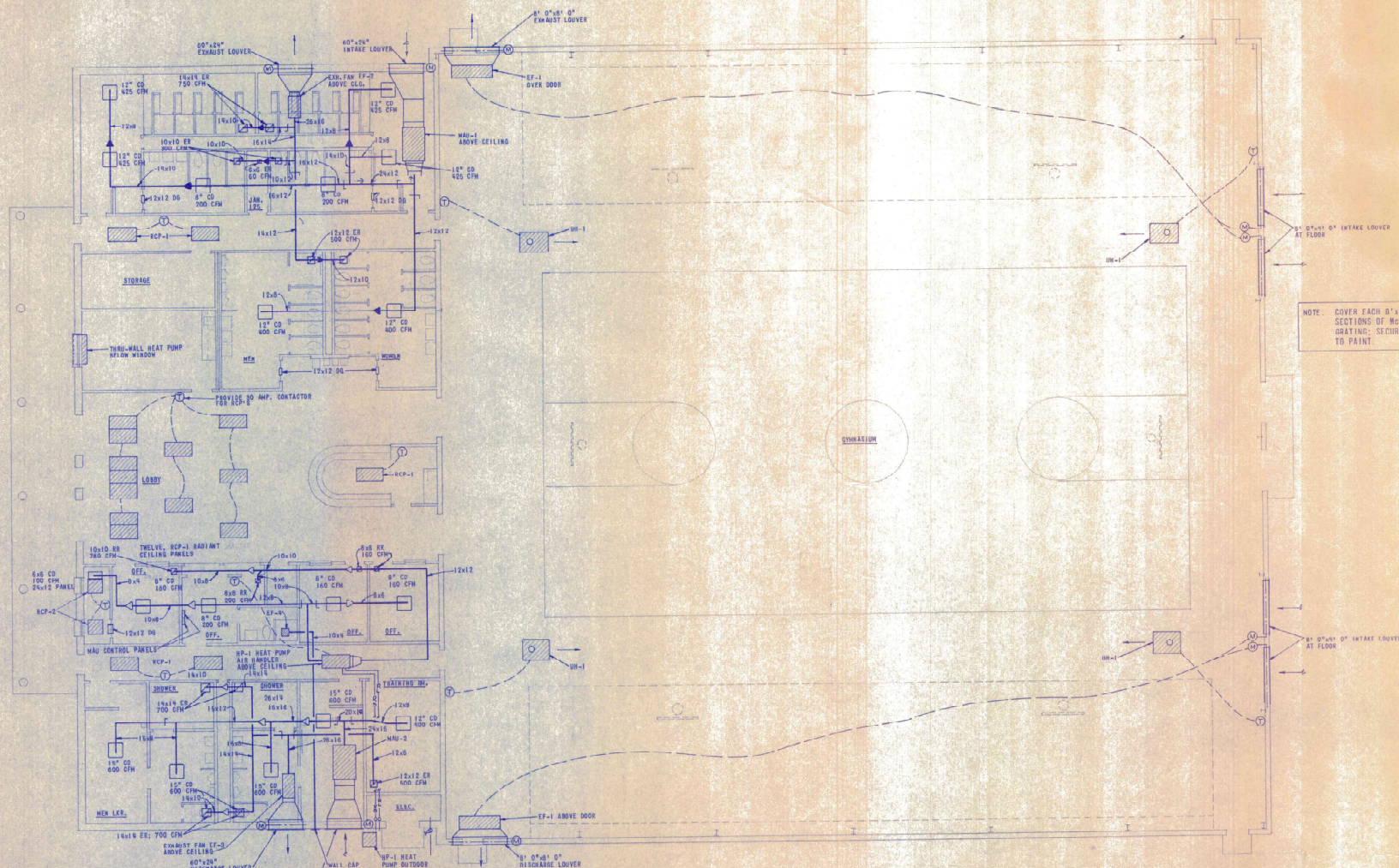
7-7 HWY. 45 NORTH
 INLA ARCHER, P.A., ARCHT.
 10 WILLIAMSON ARCHT. ALA.
 MOBILE, MISSISSIPPI 36607
 601-925-1071

ARCHER & ARCHER, P.A.
 ARCHITECTS - ENGINEERS



BOWRON & BUTLER
 CONSULTING ENGINEERS
 JACKSON, MISSISSIPPI
 PHONE 969-1316

APPROVED BY	
DRAWN BY	
DATE	8/20/85
SHEET	16
OF	22



NOTE: COVER EACH 0'x4" INTAKE LOUVER WITH TWO 4'x4' SECTIONS OF MONICKOLS CO. 4.0 LB. CATWALK GRATING. SECURE TO WALL DIRTS. GEN. CONT. TO PAINT.

FLOOR PLAN - HVAC
SCALE: 1/8" = 1' 0"



A MULTIPURPOSE BUILDING FOR
E. M. J. C.
SCOOBIA, MISSISSIPPI
BILL ARCHER, P.A. ARCHT. P.A.
C. WILKINSON, ARCHT. P.A.
JACKSON, MISSISSIPPI 39201

ARCHER & ARCHER, P.A.
ARCHITECTS - ENGINEERS



BOWRON & BUTLER
CONSULTING ENGINEERS
JACKSON, MISSISSIPPI
PHONE 959-1316

APPROVED BY	CS
DRAWN BY	CS
DATE	8/20/85
SHEET	19
OF	22

SPLIT SYSTEM HEAT PUMP SCHEDULE

NO.	MAKE	MODEL		INDOOR UNIT FAN				SYSTEM COOLING				SYSTEM HEATING W/O SUPPLEMENTARY HEATERS		SUPPLEMENTARY ELEC. HEATERS		MIN. F.F.R. MBH/WATTS	REMARKS						
		INDOOR UNIT	OUTDOOR UNIT	TOTAL -CFM	D.A. -CFM	EXT.'S.P. INS. WATER	MOTOR	COIL ENT. AIR TEMP. °Fdb	°Fwb	OUTSIDE AIR TEMP. °Fdb	°Fwb	TOTAL CAPACITY MBH	COMPRESSOR	CONDENSER FAN	INDOOR COIL E.A.T. °Fdb			W/O SUPPLEMENTARY HEATERS °Fdb	OUTDOOR COIL E.A.T. °Fdb	°Fwb	GAPACITY MBH	KW	ELECTRIC SERVICE NO. STAGES
HP-1	CARRIER	40A024	380F024	800	0-	.40	1/4HP-208V-1PH	80	87	95	70	22.4	13.0FLA-208V-1PH	1/1FLA-208V-1PH	70	48	43	23.4	5.0	208V-1PH	1	9.35	PROVIDE LIQUID LINE SOLENOID

EXHAUST FAN SCHEDULE

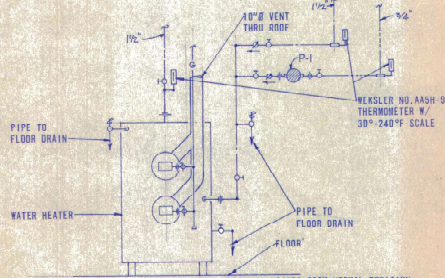
NO.	MAKE AND MODEL	TYPE	CFM	STATIC PRESS. INCHES W. G.	RPM	MOTOR	INTERLOCK	REMARKS
EF-1	GREENHECK SPN-60	WALL FRODCELLER	30,000	.25	360	5.0HP-208V-3PH	MOTORIZED LOUVERS	MOTORSIDE GUARD, MOUNTING COLLAR, D.S., M.M.S.
EF-2	GREENHECK SDB-16-7	IN-LINE CENTRIFUGAL	3,160	.30	1180	3/4HP-208V-3PH	MAU-1; MTR. LOUVERS	INSULATED HOUSING, VIBRATION ISOLATORS, D.S.
EF-3	GREENHECK SDB-10-7	IN-LINE CENTRIFUGAL	3,300	.38	1240	1.0HP-208V-3PH	MAU-2; MTR. LOUVERS	INSULATED HOUSING, VIBRATION ISOLATORS, D.S.
EF-4	GREENHECK SP-15	CEILING	90	.13	1050	5FLA-115V-1PH	LIGHT SWITCH	

GAS FIRED UNIT HEATER SCHEDULE

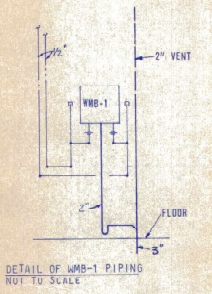
NO.	MAKE AND MODEL	TYPE	INPUT-MBH	CFM	VENT SIZE - INCHES	MOTOR	REMARKS
UH-1	BEZNR X18300	BLOWER	300	2960	12	3/4HP-208V-3PH	VIBRATION ISOLATORS; 60° DISCHARGE NOZZLE

GAS FIRED MAKEUP AIR UNIT SCHEDULE

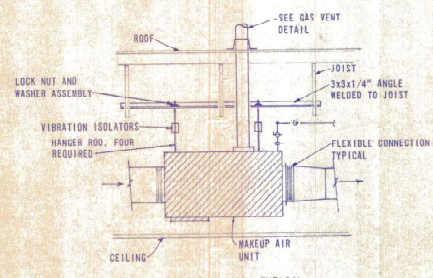
NO.	MAKE AND MODEL	INPUT-MBH	FAN			MOTOR	VENT SIZE - INCHES
			TOTAL -CFM	D.A. -CFM	EXT. S.P. INS. W.G.		
MAU-1	BEZNR XE350	350	2900	2900	.50	1 1/2HP-208V-3PH	12
MAU-2	BEZNR XE300	300	2800	2800	.50	1.0HP-208V-3PH	10



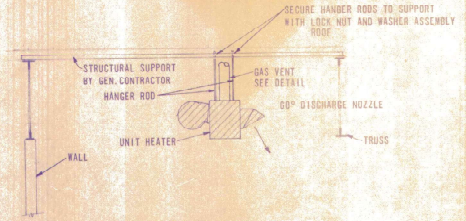
NOTE: COLD WATER INLET MUST BE 90° TOWARD FRONT OF HEATER FROM NORMAL POSITION TO FACILITATE PIPING CONNECTIONS. OUSERVE MANUFACTURER'S DIRECTIONS WITH REGARD TO REQUIRED CLEARANCES.
DETAIL OF WATER HEATER PIPING CONNECTIONS NOT TO SCALE.



DETAIL OF MAU-1 PIPING NOT TO SCALE



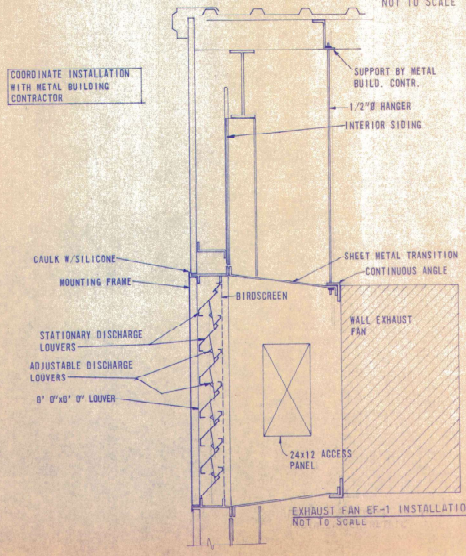
SECTION AT MAKEUP AIR UNIT, TYPICAL NOT TO SCALE



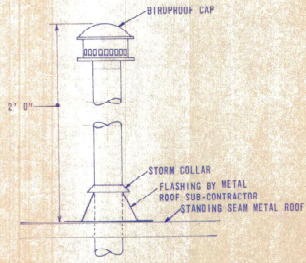
SECTION AT BLOWER UNIT HEATER, TYPICAL NOT TO SCALE

SINGLE LINE DUCT FITTING LEGEND

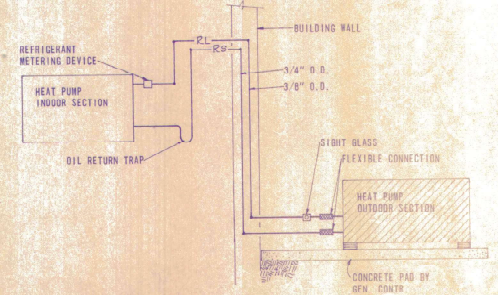
SINGLE LINE INDICATION	TYPE FITTING REQUIRED



EXHAUST FAN EF-1 INSTALLATION DETAIL NOT TO SCALE



DETAIL OF GAS VENT INSTALLATION NOT TO SCALE



DETAIL OF HEAT PUMP REFRIGERANT PIPING NOT TO SCALE

A MULTIPURPOSE BUILDING-FIRM
 E. M. J. C.
 SCOOBIA, MISSISSIPPI
 177 W. 40th St. MOBILE, ALA.
 601-483-1411
 601-483-1412

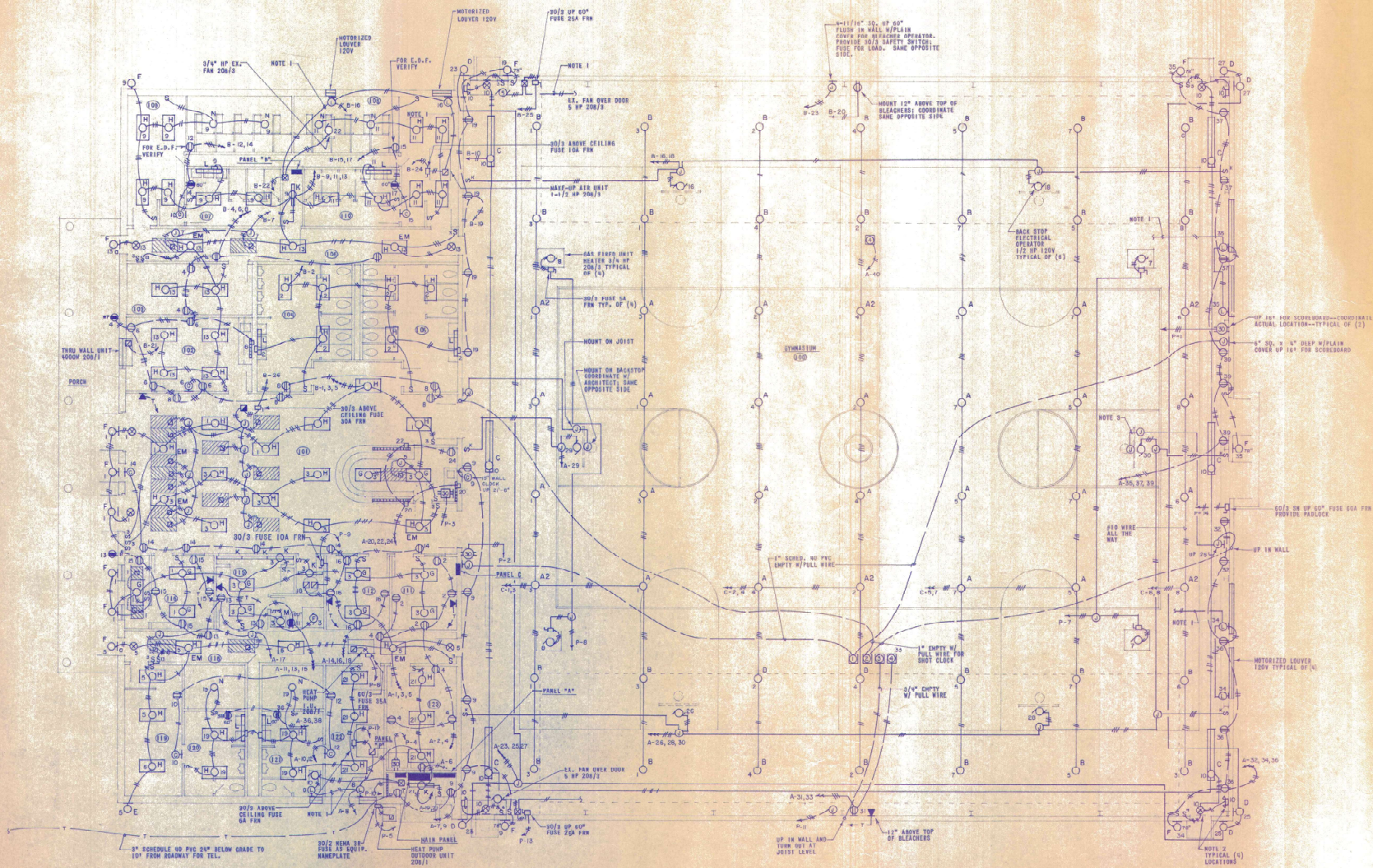
ARCHER & ARCHER, P.A.
 ARCHITECTS - ENGINEERS



POWRON & BUTLER
 CONSULTING ENGINEERS
 1000 W. 10th St. MOBILE, ALA. 36688
 PHONE 937-1316

APPROVED BY: E. M. BUTLER
 DRAWN BY: E. M. J. C.
 DATE: 8/20/65
 SHEET: 2.0
 OF: 2.2

- NOTES, THIS SHEET: 1. INTERLOCK LOUVER MOTOR WITH CONTROLLER WITH 2F12-17A.
 2. WIRE GUARD FOR EXIT LIGHTS AND POLYCARBONATE GUARD FOR EMERGENCY LIGHTS IN OWN AREA.
 3. CONDUIT FOR FOOT CLOCK 1" EMPTY W/PULL WIRE; PROVIDE 1/2" ABOVE TOP OF BLEACHERS; CONDUIT AT POINTS AS REQUIRED FOR MOTORIZED BASKETS.



ELECTRICAL PLAN
 SCALE: 1/8" = 1'-0"

A MULTIPURPOSE BUILDING FOR
 F. M. L. C.
 SOCIAL MISSISSIPPI
 400 W. 14th St.
 JACKSON, MISSISSIPPI
 39201

ARCHER & ARCHER, P.A.
 ARCHITECTS - ENGINEERS

APPROVED BY
 W.C.C.
 DRAWN BY
 V.E.
 DATE
 8/20/83
 SHEET
 1
 OF
 22



PANEL SCHEDULE

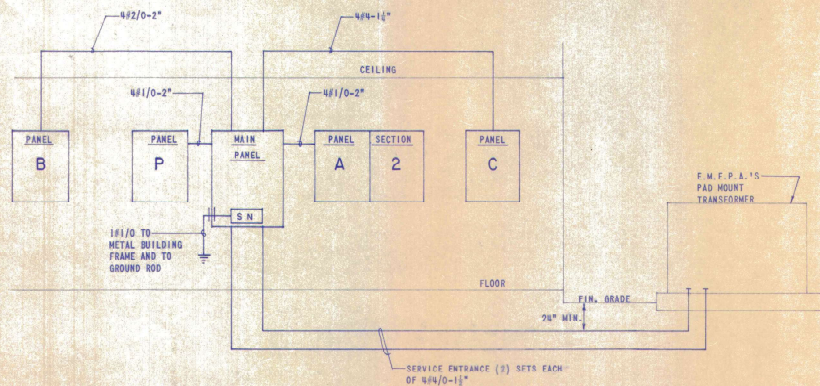
PANEL	CIRCUIT NUMBER	BREAKER	FRAME	WIRE	SERVES	TYPE
A	1-40	20/1	100L	#12	LTG. & MISC.	225 AMP. M.L.O. 120/208V 3Ø 4W WYE SURFACE - 2 SECTION W/GROUND BUS
	41-52	20/1	100L	--	SPARE	
B	1-20	20/1	100L	#12	LTG. & MISC.	225 AMP. M.L.O. 120/208V 3Ø 4W WYE SURFACE
	21	30/2	100L	#10	A/C UNIT	
	22-24	15/3	100L	#12	FANS, BLEACHERS	W/GROUND BUS
	25, 26	30/3	100L	#10	FANS, RAD. HEAT	
	27-31	20/1	100L	--	SPARE	
C	1-6	20/2	100L	#12	COURT LIGHTING	100 AMP. M.L.O. 120/208V 3Ø 4W WYE FLUSH
	9, 10	20/2	100L	--	SPARE	
P	1, 2	30/1	100L	#10	SCORE BOARD	SAME AS "B"
	3-5	30/2	100L	#10	MISC. EQUIP.	
	6	40/2	100L	#8	HEAT PUMP I.U.	
	7-12	15/3	100L	#12	MISC. EQUIPMENT	
	13	30/3	100L	#10	EXHAUST FAN	
	14	50/3	100L	#6	SAFETY SWITCH	
	15	15/3	100L	--	SPARE	
	16	30/3	100L	--	SPARE	
MAIN PANEL	1	30/3	225	#4	PANEL C	600 AMP. M.L.O. 120/208V 3Ø 4W WYE SURFACE
	2	150/3	225	#1/0	PANEL A	
	3	150/3	225	#1/0	PANEL P	SERVICE ENTRANCE EQUIPMENT
	4	175/3	225	#2/0	PANEL B	
	5	100/3	225	--	SPARE	

LIGHTING FIXTURE SCHEDULE

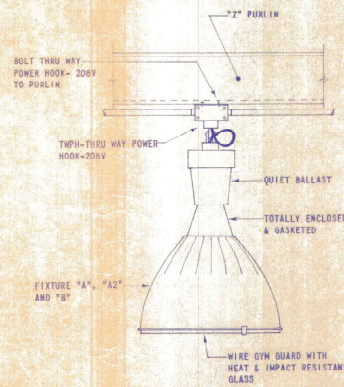
FIXTURE	MANUFACTURER	CATALOG NUMBER	LAMP	MOUNTING	REMARKS
A	LUMARK	MHEK-ENSA-18M 100-W518/OLC QUIET BALLAST	100W M.H.	PENDANT ON "2" PURLIN	METAL HALIDE, ENCLOSED & GASKETED, WITH WIRE GUARD
A2	LUMARK	MHEK-ENSA-18M 100-W518/OLC QUIET BALLAST	100W M.H.	SAME AS "A"	SAME AS "A" WITH QUARTZ RE-STRIKE SYSTEM WITH WIRE GUARD
B	LUMARK	MHEK-ENSA-18M 250-W518/OLC QUIET BALLAST	250W M.H.	SAME AS "A"	METAL HALIDE, ENCLOSED & GASKETED, WITH WIRE GUARD
C	MILLER	E1-2201-08, E1-100221	(2)F60	ON PURLINS	APERTURED INDUSTRIAL WITH WIREGUARD
D	HOLOPHANE	606-BA-PR	100W H. P. S.	UP 27'-0"	WITH PHOTOCONTROL
E	HOLOPHANE	600-BA-PR	100W H. P. S.	UP 11'-0"	WITH PHOTOCONTROL
F	PRESCOLITE	1009	100W	UP 8'-0" OR AS INDICATED	ROUND CRYSTAL GLASS
G	METALUX	26-440-A12, 126	(1)F40	LAY-IN NEMA STYLE 6	ACRYLIC LENS TROFFER
H	METALUX	26-840-A12, 126	(3)F40	" " " "	ACRYLIC LENS TROFFER WITH EMERGENCY BATTERY PACK WHEN WITH "EM"
K	METALUX	5M-140 LBS	(1)F40	CEILING	OPEN STRIP
L	PRESCOLITE	3085	(7)F40	UP 8'-8"	TRANSLUCENT ACRYLIC WRAP AROUND DIFFUSER
M	PRESCOLITE	WB-19	(2)100W	UP 6'-8"	OPAL GLASS
N	DEVINE	4590-W-1WC-UM	180W	RECESSED	WITH UNIVERSAL HANGAR BRACKETS DROP PRISMATIC LENS
EXIT	DUAL-LITE	E2X-8W-WP-F2-MDE	(1)15T6 (2)24.8W	CEILING OR OVER DOOR	EMERGENCY BATTERY PACK--WALL MOUNTED WITH WIRE GUARD
EMERGENCY	DUAL-LITE	E2-2-VRS	(2)17.2W	UP 7'-0"	EMERGENCY BATTERY PACK WITH VANDAL RESISTANT POLYCARBONATE SHIELD

ELECTRICAL SYMBOLS

	CEILING OUTLET, FIXTURE TYPE, CIRCUIT NUMBER
	WALL OUTLET, FIXTURE TYPE, CIRCUIT NUMBER
	CEILING OUTLET WITH FLUORESCENT FIXTURE
	WALL OUTLET WITH FLUORESCENT FIXTURE
	EMERGENCY LIGHT
	EXIT LIGHT
	WALL SWITCH, SINGLE POLE UP 66"
	WALL SWITCH, 3-WAY UP 46"
	WALL SWITCH, 4-WAY UP 46"
	SAFETY SWITCH AS INDICATED
	CONDUIT CONCEALED IN WALL OR CEILING, NUMBER OF WIRES
	CONDUIT RUN EXPOSED, NUMBER OF WIRES
	CONDUIT CONCEALED IN OR UNDER FLOOR SLAB OR BELOW GRADE, NUMBER OF WIRES
	CONDUIT HOME RUN TO PANEL, CIRCUIT NUMBERS, NUMBER OF WIRES
	WALL TELEPHONE OUTLET UP 14" OR AS INDICATED
	TELEPHONE CONDUIT HOME RUN TO TELEPHONE RACKBOARD
	DUPLEX CONVENIENCE OUTLET UP 14" OR AS INDICATED, "WP" INDICATES WEATHERPROOF
	GROUND FAULT CIRCUIT INTERRUPTING RECEPTACLE UP 14" OR AS INDICATED
	JUNCTION BOX
	CONNECTION TO FAN, FAN BY OTHERS
	MAGNETIC STARTER BUILT INTO EQUIPMENT OR FURNISHED BY MECHANICAL CONTRACTOR INSTALLED & CONNECTED BY ELECTRICAL CONTRACTOR
	CONNECTION BOX OR TERMINAL BOX IN MECHANICAL EQUIPMENT, CONNECTED BY ELECTRICAL CONTRACTOR
	KEY TYPE SWITCH FURNISHED WITH BACKSTOP, INSTALLED BY ELECTRICAL CONTRACTOR BY M.C.
	ELECTRIC MOTOR, APPROXIMATE HORSEPOWER WHEN INDICATED
	RADIANT CEILING PANEL INSTALLED BY MECHANICAL CONTRACTOR, CONNECTED BY ELECTRICAL CONTRACTOR
	NEMA 5-30R RECEPTACLE, 30 AMP, 125 VOLT, HEIGHT AS INDICATED
	NEMA 6-30R RECEPTACLE, 30 AMP, 125 VOLT, UP 42" OR AS INDICATED
	FLOOR BOX, LOW ELECTRIC NO. 58-55 FOR SCOREBOARD
	FLOOR BOX, LOW ELECTRIC NO. 58-55 FOR SHOT CLOCK
	FLOOR BOX, LOW ELECTRIC NO. 1101 FOR FUTURE P.A.
	FLOOR BOX, LOW ELECTRIC NO. 1101-010 WITH FLIP-TOP COVER AND DUPLEX RECEPTACLE
	WALL SWITCH, SINGLE POLE WITH LIGHTED HANDLE, 15" OR AS INDICATED, "EM"
	WIREMOLD PLUGMOLD WITH OUTLETS 6" O.C., MOUNT IN COUNTER AND ABOVE BACK SPLASH AT OTHER LOCATIONS
	CONTRACTOR FOR RADIANT PANELS FURNISHED BY MECHANICAL CONTRACTOR, INSTALLED BY ELECTRICAL CONTRACTOR
	CONNECTION TO MOTORIZED LOUVERS
	WALL CLOCK, SIMPLEX TYPE 2380 - 137" OR AS INDICATED, "M" TYPE 2380-BUY RECEPTACLE ASSEMBLY, UP 81'-0"
	TELEPHONE RACKBOARD



ELECTRICAL RISER DIAGRAM
NOT TO SCALE



DETAIL, FIXTURES "A", "A2", "B" MOUNTING
NOT TO SCALE

A MULTIPURPOSE BUILDING FOR
 M. J. C.
 ARCHER & ARCHER, P.A.
 ARCHITECTS - ENGINEERS
 1000 W. WASHINGTON AVENUE
 JACKSON, MISSISSIPPI 39201
 PHONE (601) 487-4477
 FAX (601) 487-4477



APPROVED BY _____
 DRAWN BY _____
 DATE 4/20/85
 SHEET 2/2
 OF 2